

4

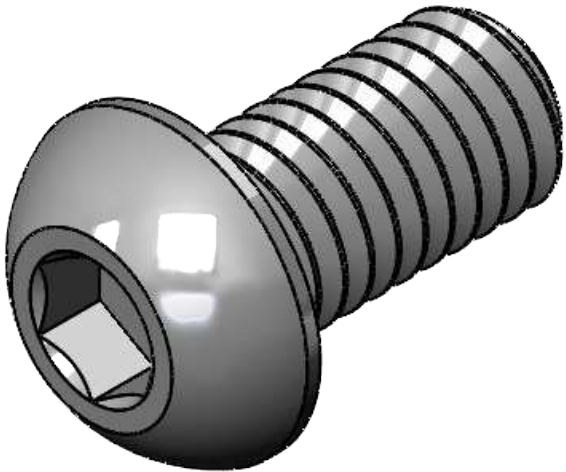
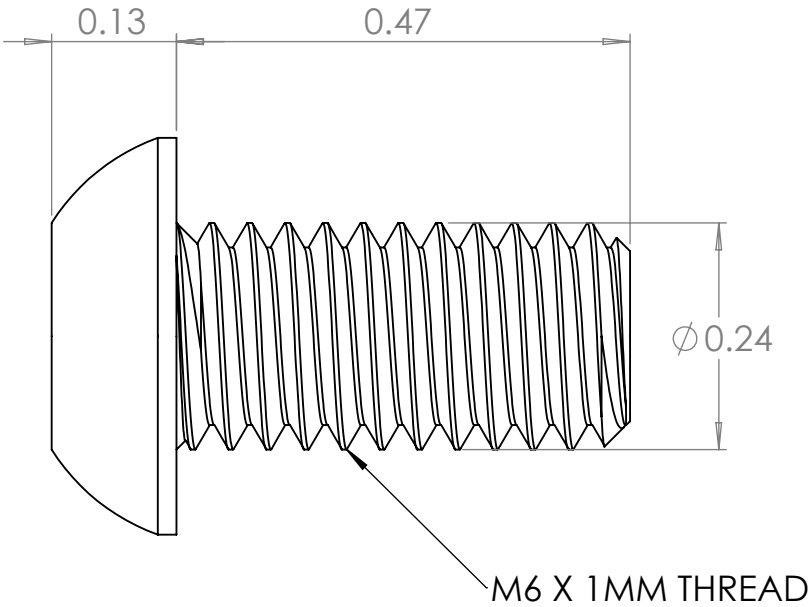
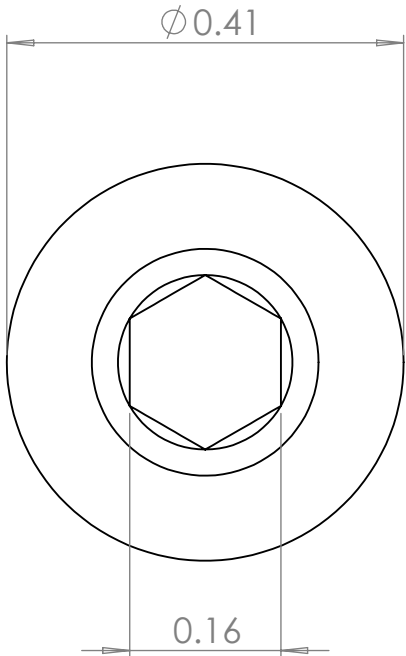
3

2

1

B

B


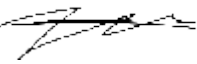


A

A

- NOTES: UNLESS OTHERWISE SPECIFIED.
- 1. PARAMETRIC MODEL. ALL DIMENSIONS FURTHER SPECIFIED IN 003-00101.
  - 2. MATERIAL: 18-8 STAINLESS STEEL
  - 3. FINISH: PASSIVATED
  - 4. PART SHALL NOT BE MODIFIED BY ANY PARTY OUTSIDE PAPERLESS PARTS, INC UNLESS WRITTEN OR EXPRESS APPROVAL HAS BEEN PERMITTED FOR THE PART.
  - 5. MANUFACTURER: MCMaster-CARR
  - 6. MPN: 92095A226

**PROPRIETARY AND CONFIDENTIAL**  
THE INFORMATION CONTAINED IN THIS  
DRAWING IS THE SOLE PROPERTY OF  
PAPERLESS PARTS, INC. ANY  
REPRODUCTION IN PART OR AS A WHOLE  
WITHOUT THE WRITTEN PERMISSION OF  
PAPERLESS PARTS, INC IS  
PROHIBITED.

UNLESS OTHERWISE SPECIFIED:		NAME	DATE	<div></div> <div>TITLE: <b>DRIVE SCREW, BH, M6X1, 12MM, 18-8 SS</b></div>	
DIMENSIONS ARE IN INCHES		DRAWN	NM		
TOLERANCES:		CHECKED			
ANGULAR: MACH ± 1.0°		ENG APPR.			
BEND ± 0.5°		MFG APPR.			
ONE PLACE DECIMAL ± 0.1		Q.A.		<div>COMMENTS:</div> <div></div>	
TWO PLACE DECIMAL ± 0.05					
INTERPRET GEOMETRIC TOLERANCING PER: ASME Y14.5					
MATERIAL		DWG. NO.		REV	
18-8 STAINLESS STEEL		003-00101		000	
FINISH		SCALE: NTS		WEIGHT: SEE MODEL	SHEET 1 OF 1
PASSIVATED					
DO NOT SCALE DRAWING					

3

2

1